



## High-fidelity sound, low-key look

The Sonos collection of architectural speakers makes it easy to bring premium sound to every part of a home. Designed and tuned in collaboration with Sonance, these speakers offer natural, room-filling sound with discreet installation.

## Optimized for Sonos Amp

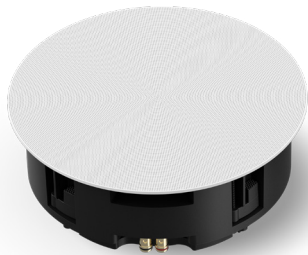
Amp reliably powers up to three pairs of speakers (six total) when wired in parallel, maximizing their output and filling more of your space with high-quality sound.



## Sonos Amp: Power meets performance

Power Sonos architectural speakers and maximize your system's potential with this WiFi-enabled amplifier. Sonos Amp offers unique benefits like optimized tunings, overdrive protection, and Trueplay™ technology, which tailors your speakers' sound for the unique acoustics of your home. A single Amp powers up to three pairs of Sonos passive speakers.

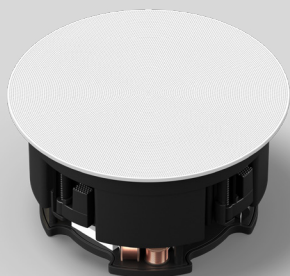




## 8" In-Ceiling Speaker

This two-way speaker features an 8" polypropylene woofer and 1.2" tweeter for expansive sound with crisp, natural highs, smooth mids, and extended lows. A newly designed, high-excursion motor produces powerful output and deep, defined bass, and an optimized waveguide delivers uniform, controlled dispersion for a seamless soundstage.

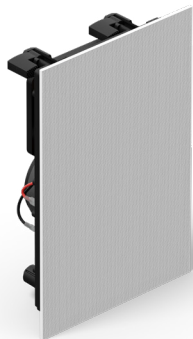
- **Frequency response (No DSP):** 41Hz - 20kHz ( $\pm 3$ dB)
- **Sensitivity:** 90 dB (2.83V/1m)
- **Impedance:** 8 $\Omega$  nominal
- **Power rating:** 160W
- **Mounting depth:** 5.32 in / 135 mm
- **Color:** White magnetic steel grille can be painted to match any color
- **Other:** Compatible with Trueplay\*



## 6" In-Ceiling Speaker

A versatile overhead solution for small to medium-sized spaces, this compact two-way speaker features a 6.5" polypropylene woofer and 1" cloth tweeter for focused coverage and clear, full-range sound with bass extension to 44 Hz.

- **Frequency response (No DSP):** 44Hz - 20kHz ( $\pm 3$ dB)
- **Sensitivity:** 89 dB (2.83V/1m)
- **Impedance:** 8 $\Omega$  nominal
- **Power rating:** 130W
- **Mounting depth:** 4.76 in / 121 mm
- **Color:** White magnetic steel grille can be painted to match any color
- **Other:** Compatible with Trueplay\*



## In-Wall Speaker

Bring immersive, cinematic sound to home theaters, entertainment spaces, and living areas with this sleek speaker that disappears into any décor. The In-Wall shares the same 6.5" woofer and 1" tweeter as the 6" In-Ceiling model, providing a similar acoustic experience. Whether in your wall or your ceiling, these speakers produce smooth mids, rich bass, and crystal-clear highs anywhere you want them.

- **Frequency response (No DSP):** 35Hz - 20kHz ( $\pm 3$ dB)
- **Sensitivity:** 89 dB (2.83V/1m)
- **Impedance:** 8 $\Omega$  nominal
- **Power rating:** 130W
- **Mounting depth:** 3.5 in / 89 mm
- **Color:** White magnetic steel grille can be painted to match any color
- **Other:** Compatible with Trueplay\*



## Outdoor Speaker



Whether in your home or on your patio, these surface-mount speakers withstand water, UV rays, and extreme temperatures. Inside, a 1" tweeter and 6.5" woofer for clear, expansive sound. Included FastMount brackets allow installation on brick or masonry surfaces. Mix and match with Sonos In-Ceiling and In-Wall speakers for seamless sound inside and outside the home.

- **Frequency response (No DSP):** 55Hz - 20kHz ( $\pm 3$ dB)
- **Sensitivity:** 89 dB (2.83V/1m)
- **Impedance:** 8 $\Omega$  nominal
- **Power handling:** 130W
- **Ingress protection rating:** IP66



## Sonos Amp

Packing 125 watts per channel, Sonos Amp powers up to six Sonos Architectural speakers. The app's Speaker Detection feature recognizes Sonos Architectural speakers and applies DSP to optimize tuning curves for clear, distortion-free sound at any volume.

- **Amplification:** Class D, 2 x 125W into 8 $\Omega$
- **Inputs:** HDMI, ethernet, stereo RCA line in
- **Outputs:** Binding post, RCA subwoofer out
- **Other:** Trueplay, Speaker Detection, front-panel controls



Access the  
Architectural  
Solution Guide