

# LIGHTING PARTNERSHIP ELECTRICAL CONTRACTOR BENEFITS



**ATERRA  
DESIGNS**



**WE FOCUS ON DESIGN, SALES, & DOCUMENTATION  
SO YOU CAN FOCUS ON SPEEDY INSTALLATIONS**

## **WHAT WE DO**

▶ Our designers have technical knowledge, market awareness, product information and lighting design expertise.

▶ We sell 2-3x more electrical options than a builder's salesperson or a design center, resulting in higher revenue for you the contractor.

▶ We create all necessary documentation and ensure that it is always accurate.



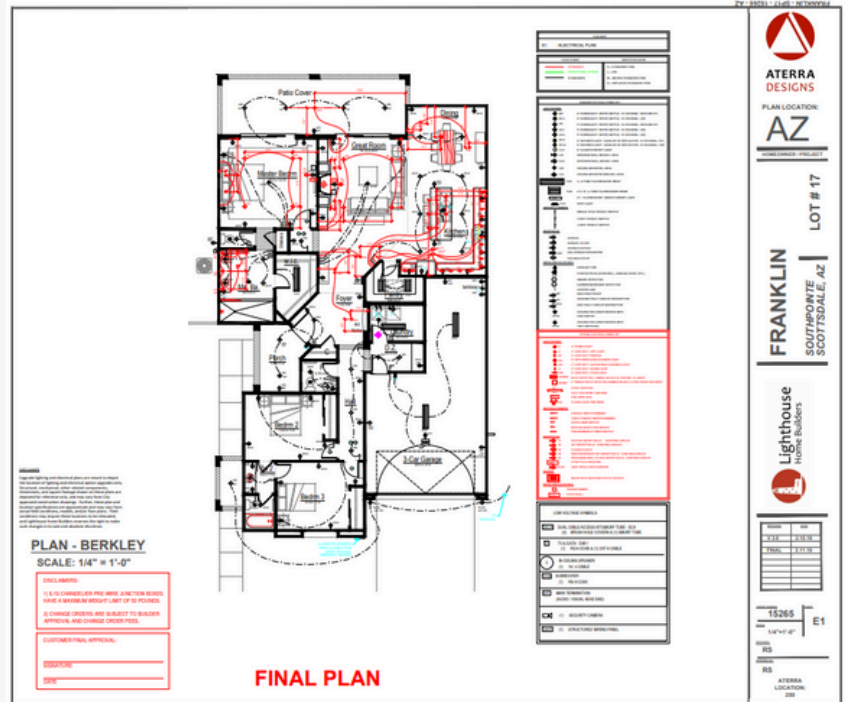
# DOCUMENTATION

## HOW IT BENEFITS YOU

No more hand-drawn minis, calls back-and-forth with builder clients, code violations, confusing new products, guesswork, or low take rates.

### Aterra Designs offers:

- Cutting-edge design
- Lot-specific plans
- Digital version control
- SKU management
- Lighting schedule
- Field support services



### Contractor focus:

- Purchase materials from BOM
- Install products off scaled and dimensioned plans
- Online contractor portal

Code	Qty	Manufacturer	Level	Description	Catalog #	UPC
APG	2	ELITE LIGHTING	*	Accent Light/Pinhole/Low Voltage/IC Housing/50W MR16 25D	B1414W-WH	
APG	2	OSRAM SYLVANIA	*	Accent Light/Pinhole/Low Voltage/IC Housing/50W MR16 25D	50W MR16 25D	
B2SM	2	JUNO LIGHTING GROUP	*	RELOCATED 6" Downlight/White Baffle/IC Housing/Non-Dim CFL (Standard)	24W-WH	

“

When we get a set of plans from Aterra, we get all the material listed out that has been specked out for the job ... when my guys go out to the field to wire the house they know exactly where to put everything.”

Owner, Haskins Electric

[INFO@ATERRADESIGNS.COM](mailto:INFO@ATERRADESIGNS.COM)